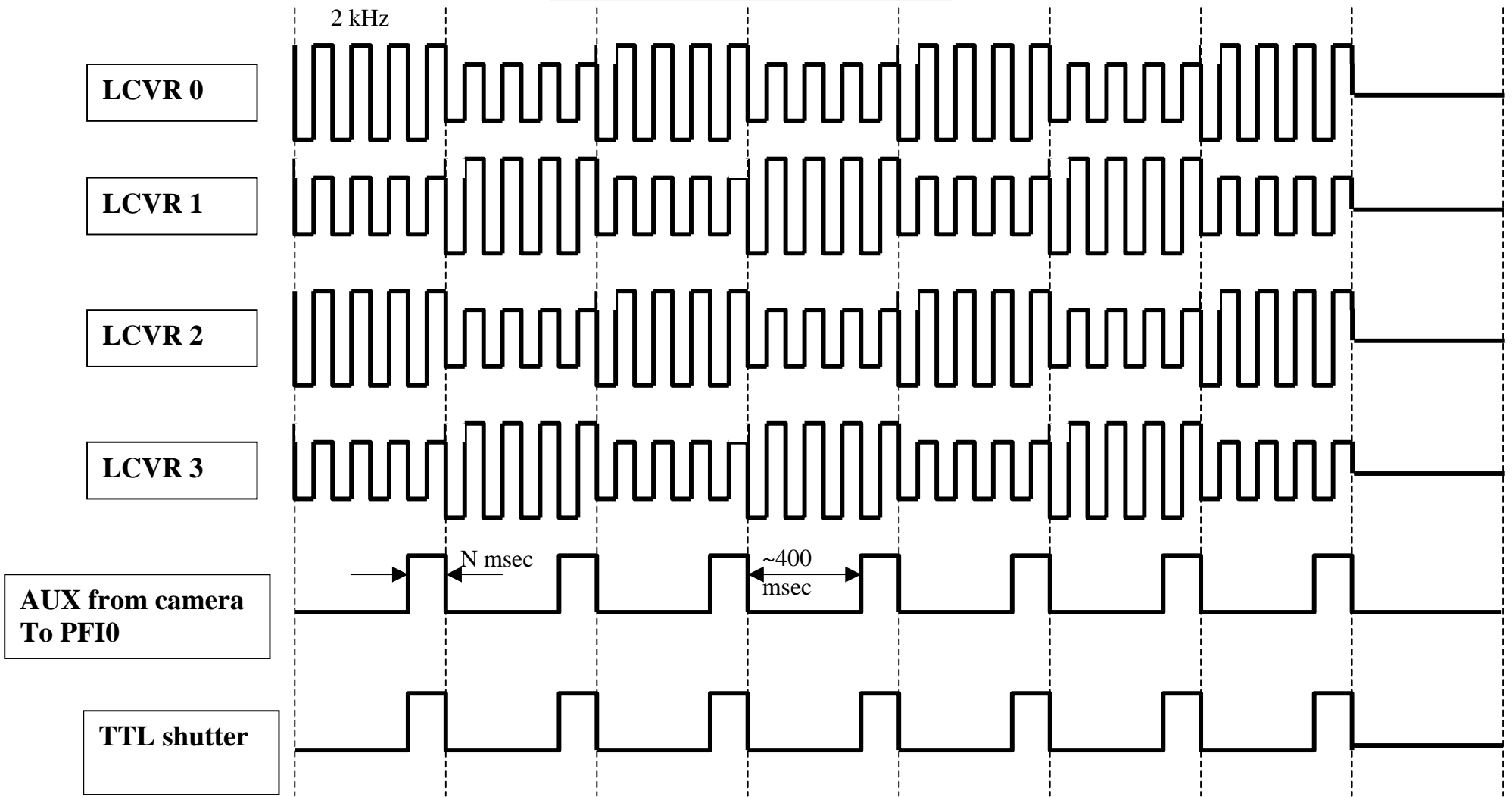


# ChroTel LCVR Timing



Chrotel D/A timing: This 7-state pattern is to be executed upon receipt of a strobe signal from the aux connector on the camera conditioned in the NI SCB68 and sent to the NI6733 board via PFI0. LCVRs operate at 2kHz. Camera exposure times are not fixed but are of the order of 10s of msec. Analog output from the NI6733 is on channels A0 through A3 and are routed through the NI SCB68 interface box. The first LCVR voltages are loaded before the camera is started. After the last frame, LCVRs are set to zero. Circuitry in the NI SCB68 sends out a TTL shutter signal.